



OLYLIFE

CHAMPION'S CHOICE



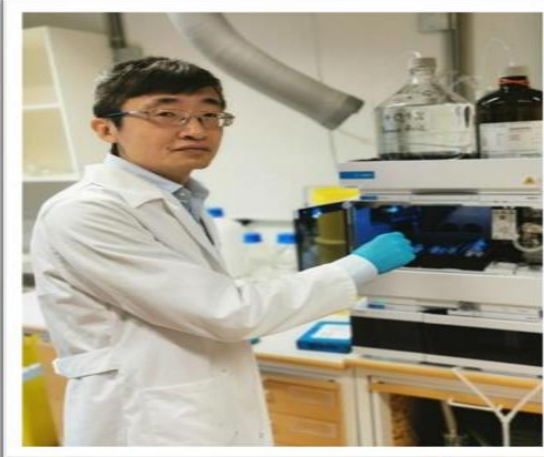
Product Concept
Respecting Nature Appreciating Science
Healthy Lifestyle
Exercise + Nutrition + Equipment



Smart Physical Therapy Device OlyLife Tera-P90

Bioelectromagnetic provides beneficial and health-enhancing electromagnetic frequencies to cells, activates cell functions, increase oxygen uptake and

Enhance self-healing ability to achieve an optimal health.



Dr. Yang Jie Chief Scientific Advisor of OlyLife

- Post Doctoral of the University of Gothenburg, Sweden..
- Research project researcher for the Wallenberg Center for Molecular and Translational Medicine.
- **Assistant Professor** ,Department of Chemistry and Molecular Biology, **Royal Swedish Academy of Sciences.**
- Focused on research project on absorption and nutrients for small molecule peptide for more than 10 years.
- Participated in a joint project with AstraZeneca, **one of the developers of the AZ vaccine since 2016.**



Founded in 1739, the Royal Swedish Academy of Sciences has a history of more than **280 years**. It is the only scientific academy in the world that has achieved the **most Nobel Prize winners.**

Patent Certification



★ **158** patents

 **Certified Product**



 **158 Product Patent Certificates**





01

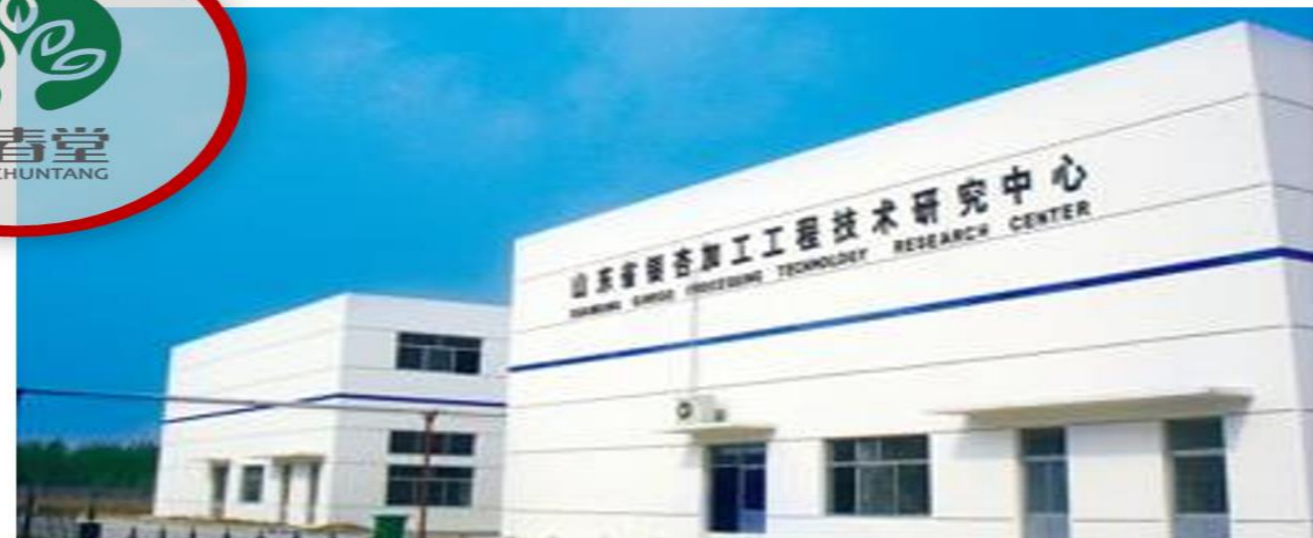
"Yong Chun Tang" was founded in 1999. It is a **well-known "Large Health" & listed company** in China. It obtained **the valid direct sales license** in China in 2015.

02

Yong Chun Tang Group of Companies is involved in the upstream, midstream, and downstream activities of the entire industry, including scientific research collaborations with higher institutions of learning and universities, to developing health products and commercializing the products.

03

Based on our philosophy, hand in hand, together we bring "OlyLife" to the world.



2 Production Base

NUS study: Brief weekly magnetic muscle therapy improves mobility and lean body mass in older adults.



Since starting the weekly BIXEPS sessions, 73-year-old housewife Mrs Yvette Cheak (seated) experienced less swelling at her ankle and knee, and she became more energetic. On some days, she is able to walk at home without a walking stick.

23 May 2023 | Highlights Press Releases Impact Research

NUS study: Brief weekly magnetic muscle therapy improves mobility and lean body mass in older adults

The BIXEPS device invented by NUS researchers delivers promising results of reversing age-related frailty and metabolic disorders



Assoc Prof Alfredo Franco-Obregón (standing, right), Principal Investigator at NUS Institute for Health Innovation & Technology, and Ms Sharanya Venugopal (standing, left), Clinical Research Coordinator at QuantumTX, with 79-year-old BIXEPS user Mr George Teo.

A decline in functional mobility, loss of muscle strength and an increase in body fats are often associated with ageing. This trend could potentially be reversed by way of an innovative magnetic muscle therapy pioneered by researchers from the National University of Singapore (NUS).

In a recent community study conducted in Singapore involving 101 participants aged between 38 to 91 years old, weekly exposure to very low levels of proprietary pulsed electromagnetic field (PEMF), using the BIXEPS device invented by NUS researchers in 2019, is associated with significant improvements in mobility and body composition after 12 weeks, particularly in older persons. Participants also reported reduced perception of pain after 3 months of magnetic muscle therapy.

New medical device uses magnetic field to boost muscle recovery

BY SHERLYN SEAH

Published January 22, 2019
Updated January 22, 2019



National University of Singapore

NUS Associate Professor Alfredo Franco-Obergón (left) leading a demonstration of MRegen. He led a team of researchers in developing the medical device that uses magnetic field to regenerate muscle cells.



Assoc Prof Alfredo Franco-Obergón (standing, right), Principal Investigator at NUS Institute for Health Innovation & Technology, and Ms Sharanya Venugobal (standing, left), Clinical Research Coordinator at QuantumTX, with 79-year-old BIXEPS user Mr George Teo.

HEALTH & MEDICAL NEWS

This 10-minute therapy could stop age-related muscle weakness

JUNE 2, 2023

by Jocelyn Solis-Moreira

SINGAPORE — Getting magnetic muscle therapy once a week can delay any age-related losses in muscle strength, according to a new trial in Singapore. After 12 weeks, older adults also saw their functional mobility improve and their body fat decrease.

Clinical Research and Studies

Research Paper

Brief, weekly magnetic muscle therapy improves mobility and lean body mass in older adults: a Southeast Asia community case study

Sharanya Venugopal¹, Yee Kit Tai^{2,3,4,5}, Jorming Goh^{6,7,8,9}, Sean Teh⁷, Craig Wong^{2,3,4}, Nam Goh¹, Andrea B. Miller^{10,11}, Brian K. Kennedy^{12,13,14}, Alfredo Franco-Oregón^{15,16,17,18}

- ¹QuantumX, Alexandra Hospital, Block 29 Level 1 Centre for Innovation in Healthcare, Co-Working Space, Singapore
- ²Department of Surgery, Yong Loo Lin School of Medicine, National University of Singapore, Singapore
- ³Institute of Health Technology and Innovation (iHealthTech), National University of Singapore, Singapore
- ⁴Biologic Currents Electromagnetic Pulsing Systems Laboratory (BCPEPS), National University of Singapore, Singapore
- ⁵NUS Centre for Cancer Research, Yong Loo Lin School of Medicine, National University of Singapore, Singapore
- ⁶Department of Physiology, Yong Loo Lin School of Medicine, National University of Singapore, Singapore
- ⁷Healthy Longevity Translational Research Programme, Yong Loo Lin School of Medicine, National University of Singapore, Singapore
- ⁸Centre for Healthy Longevity, National University Health System, Singapore
- ⁹Singapore Institute of Clinical Sciences, A*STAR, Singapore
- ¹⁰Department of Human Movement Sciences, @AgeAmsterdam, Faculty of Behavioural and Movement Sciences, Amsterdam Movement Sciences, Vrije Universiteit, Amsterdam, The Netherlands
- ¹¹Department of Biochemistry, Yong Loo Lin School of Medicine, National University of Singapore, Singapore
- ¹²Nanomedicine Translational Research Programme, Centre for NanoMedicine, Yong Loo Lin School of Medicine, National University of Singapore, Singapore

Correspondence to: Alfredo Franco-Oregón, afco@nus.edu.sg, afco@helsinki.fi
Keywords: sarcopenia, intra-abdominal fat, frailty, muscle weakness, type 2 diabetes mellitus
Received: January 14, 2023 | Suggested: March 4, 2023 | Published: March 16, 2023

Copyright: © 2023 Venugopal et al. This is an open access article distributed under the terms of the [Creative Commons Attribution License \(CC BY 3.0\)](https://creativecommons.org/licenses/by/3.0/), which permits unrestricted use, distribution, and reproduction in any medium, provided the original author and source are credited.

ABSTRACT

Brief (10 min) weekly exposure to low energy pulsed electromagnetic fields (PEMF) has been shown to improve human muscle mitochondrial bioenergetics and attenuate systemic lipotoxicity following anterior cruciate ligament surgical reconstruction. Here we present data generated from 101 participants (62% female, aged 80–91 years, recruited from the QuantumX Demo Centre in Singapore, wherein 87% of participants (n=88) presented with pre-existing mobility dysfunction and 13% (n=13) were healthy volunteers. Participants were recruited to: (i) not present; (ii) above 15 years of age and (iii) without surgical implants. All participants completed mobility testing, pre- and post- PEMF intervention for 12 weeks, whereas bioelectrical impedance analysis was conducted in a subgroup of 42 and 33 participants at weeks 4 and 8, respectively. Weekly PEMF exposure was associated with significant improvements in mobility (Tined Up and Go, 5 times Sit to Stand, and 4m Timed Get Speed) and body composition (increased skeletal muscle mass and reduced total and visceral fat mass), particularly in the older participants. Perception of pain was also significantly reduced. PEMF therapy may provide a manner to counteract age-associated mobility and metabolic disruptions and merits future investigation in randomized controlled trials to elucidate its clinical benefits in the frail and older adult population.

Magnetic field therapy enhances muscle mitochondrial bioenergetics and attenuates systemic ceramide levels following ACL reconstruction: Southeast Asian randomized-controlled pilot trial

Mary C. Sorensen^{1,2,3,4}, Lingang Krishna^{5,6}, Rina Malathi Ponnus Selvan^{5,6}, Yee Kit Tai^{7,8,9}, Craig Jun Ke Wong^{10,11}, Jorming Naitin Yin¹², Shi-Jie Teh¹³, Federico Tosti¹⁴, Alexander Tröbel¹⁵, Jörg Fröhlich¹⁶, Christian Bayer¹⁷, Ang Ze Li¹⁸, Sara S. Tam¹⁹, Chun-Ki Wong²⁰, Duranmangas Chivamany²¹, Seny Sivaprasadarao Pillai²², Chester Lee Dean^{23,24}, Markus H. Weiskopf²⁵, Aron J. Tozman²⁶, Alfredo Franco-Oregón^{27,28,29,30}

- ¹Centre for Translational Research, Yong Loo Lin School of Medicine, National University of Singapore, Singapore
- ²Institute of Health Technology and Innovation, National University of Singapore, Singapore
- ³Department of Surgery, Yong Loo Lin School of Medicine, National University of Singapore, Singapore
- ⁴Biologic Currents Electromagnetic Pulsing Systems Laboratory (BCPEPS), National University of Singapore, Singapore
- ⁵Department of Physiology, Yong Loo Lin School of Medicine, National University of Singapore, Singapore
- ⁶Healthy Longevity Translational Research Programme, Yong Loo Lin School of Medicine, National University of Singapore, Singapore
- ⁷Centre for Healthy Longevity, National University Health System, Singapore
- ⁸Singapore Institute of Clinical Sciences, A*STAR, Singapore
- ⁹Department of Human Movement Sciences, @AgeAmsterdam, Faculty of Behavioural and Movement Sciences, Amsterdam Movement Sciences, Vrije Universiteit, Amsterdam, The Netherlands
- ¹⁰Department of Biochemistry, Yong Loo Lin School of Medicine, National University of Singapore, Singapore
- ¹¹Nanomedicine Translational Research Programme, Centre for NanoMedicine, Yong Loo Lin School of Medicine, National University of Singapore, Singapore
- ¹²Department of Orthopaedics, National University of Singapore, Singapore
- ¹³Department of Orthopaedics, National University of Singapore, Singapore
- ¹⁴Department of Orthopaedics, National University of Singapore, Singapore
- ¹⁵Department of Orthopaedics, National University of Singapore, Singapore
- ¹⁶Department of Orthopaedics, National University of Singapore, Singapore
- ¹⁷Department of Orthopaedics, National University of Singapore, Singapore
- ¹⁸Department of Orthopaedics, National University of Singapore, Singapore
- ¹⁹Department of Orthopaedics, National University of Singapore, Singapore
- ²⁰Department of Orthopaedics, National University of Singapore, Singapore
- ²¹Department of Orthopaedics, National University of Singapore, Singapore
- ²²Department of Orthopaedics, National University of Singapore, Singapore
- ²³Department of Orthopaedics, National University of Singapore, Singapore
- ²⁴Department of Orthopaedics, National University of Singapore, Singapore
- ²⁵Department of Orthopaedics, National University of Singapore, Singapore
- ²⁶Department of Orthopaedics, National University of Singapore, Singapore
- ²⁷Department of Orthopaedics, National University of Singapore, Singapore
- ²⁸Department of Orthopaedics, National University of Singapore, Singapore
- ²⁹Department of Orthopaedics, National University of Singapore, Singapore
- ³⁰Department of Orthopaedics, National University of Singapore, Singapore

ARTICLE INFO

Keywords: ACL reconstruction, mitochondrial bioenergetics, ceramide, mobility, muscle weakness, type 2 diabetes mellitus
Received: January 14, 2023 | **Suggested:** March 4, 2023 | **Published:** March 16, 2023

Magnetic mitohormesis: A non-invasive therapy for inflammatory disorders?

Alfredo FRANCO-OREGÓN¹

Department of Surgery, Yong Loo Lin School of Medicine, Institute of Health Technology and Innovation, @AgeAmsterdam, National University of Singapore, Singapore

Abstract: An organism's survival depends on its ability to adapt to stress. Mitochondria as the cellular integrators of environmental stresses already transfer their response to the organism level, and are thus central to the process whereby organisms adapt to their respective environments. Mitochondria produce molecular energy via cellular phosphorylation that then allows cells to biochemically respond and adapt to changes in their environment. Greater oxygen species (ROS) are by-products of cellular phosphorylation that can be either beneficial or damaging. Depending on the context, ROS can have both the capacity of environmental stress as well as cellular "mitohormesis". Mitohormesis refers to the process whereby low levels of oxidative stress (oxidative oligomers, where oxidative stress levels are normal) lower energy and therefore reduce mitochondrial ROS levels. This results in more capacity of standing mitochondrial responses and ROS production and having antioxidant control oligomers, similar to its adaptability to stress, opening avenues for the development of magnetic mitohormesis interventions for the improvement of human health. This integrative approach provides the structure and nature of magnetic field therapies as a form of clinical intervention to non-invasively address oxidative stress and enhance healthy management of chronic diseases.

Introduction: Human health and mitochondrial function are inextricably coupled (Nassan and Senolun, 2012; Venugopal et al., 2020). Nearly all of life's processes require cellular-based energy production to be executed. These include growth, repair, and immunological defense. The requisite energy for bioenergetics is predominantly supplied by the mitochondria with the participation of molecular oxygen to serve as the final electron acceptor during aerobic respiration. The capacity of molecular oxygen to successfully accept respiratory electrons from water plants an upper limit on the respiratory capacity that, when exceeded, results in the production of potentially deleterious respiratory by-products. In this respect, mitochondria as the greatest producers of reactive oxygen species (ROS) (Drobnick and Jirik-Skavaric, 2018). Approximately 0.2–2% of the electrons processed by the mitochondrial electron transport chain are available to fully reduce molecular oxygen and ultimately produce superoxide or hydrogen peroxide, the two most predominant ROS species (Yoon et al., 2003). In cases where the existing antioxidant defenses of the mitochondria are inadequate to neutralize excessive ROS production in similar circumstances where energy requirement exceeds the antioxidant capacity of the mitochondria, ROS levels can be sufficiently to oxidatively damage proteins and nucleic acids or cause lipid peroxidation within cellular membrane-derived domains like, on one level, compromise the functionality and stability of the directly implicated cell, while on another level result in the release of mitochondrial DNA and mitochondrial breakdown products into the extracellular environment. Due to its close proximity to the source of ROS production and the absence of nuclear like DNA repair mechanisms, the mitochondrial genome is particularly susceptible to oxidative damage wherein mutations are not corrected and perpetuated, ultimately compromising energy production, cellular repair, and membrane integrity and result in the escape of mitochondrial components into the general circulation where they induce systemic inflammation, systemic autoimmunity, in turn, addresses tissue regeneration and maintenance as well as damage systemic metabolism and immunity. Accordingly, a deterioration in

Magnetic fields modulate metabolism and gut microbiome in correlation with Pgc-1α expression: Follow-up to an in vitro magnetic mitohormetic study

Yee Kit Tai^{1,2} | Charmaine Ng³ | Kristy Purnanawa^{4,5} | Jasmine (ye Yee) Yee^{6,7} | Jocelyn Naitin Yin⁸ | Craig Wong⁹ | Bharati Kadamb Patel¹⁰ | Poh Loong Soong¹¹ | Pravee Poteer¹² | Jörg Fröhlich¹³ | Christian Bayer¹⁴ | Charkene Jui Ilin Fong¹⁵ | Sharanya Ramanan¹⁶ | Marco Casarosa¹⁷ | Carmine Pasquale Gernia¹⁸ | Zhi-Ling Fong¹⁹ | Rina Malathi Ponnus Selvan²⁰ | Elina Gröhn²¹ | Utku Degirmenci²² | Shi Jie Teh²³ | Pete J. Richards²⁴ | Ali Mirzaei²⁵ | Karin Vuortonen-Koivumäki^{26,27,28} | Suet Yen Cheong²⁹ | Stephen J. Ferguson³⁰ | Adriano Aguzzi³¹ | Monika Munk³² | Lei Sun³³ | Chester L. Dean³⁴ | Jiong-Wei Wang^{35,37} | Alfredo Franco-Oregón^{36,38,39}

- ¹Department of Surgery, Yong Loo Lin School of Medicine, National University of Singapore, Singapore
- ²Nanomedicine Translational Research Programme, Yong Loo Lin School of Medicine, National University of Singapore, Singapore
- ³Centre for Healthy Longevity, National University Health System, Singapore
- ⁴Department of Physiology, Yong Loo Lin School of Medicine, National University of Singapore, Singapore
- ⁵Department of Human Movement Sciences, @AgeAmsterdam, Faculty of Behavioural and Movement Sciences, Amsterdam Movement Sciences, Vrije Universiteit, Amsterdam, The Netherlands
- ⁶Department of Biochemistry, Yong Loo Lin School of Medicine, National University of Singapore, Singapore
- ⁷Nanomedicine Translational Research Programme, Centre for NanoMedicine, Yong Loo Lin School of Medicine, National University of Singapore, Singapore
- ⁸Department of Orthopaedics, National University of Singapore, Singapore
- ⁹Department of Orthopaedics, National University of Singapore, Singapore
- ¹⁰Department of Orthopaedics, National University of Singapore, Singapore
- ¹¹Department of Orthopaedics, National University of Singapore, Singapore
- ¹²Department of Orthopaedics, National University of Singapore, Singapore
- ¹³Department of Orthopaedics, National University of Singapore, Singapore
- ¹⁴Department of Orthopaedics, National University of Singapore, Singapore
- ¹⁵Department of Orthopaedics, National University of Singapore, Singapore
- ¹⁶Department of Orthopaedics, National University of Singapore, Singapore
- ¹⁷Department of Orthopaedics, National University of Singapore, Singapore
- ¹⁸Department of Orthopaedics, National University of Singapore, Singapore
- ¹⁹Department of Orthopaedics, National University of Singapore, Singapore
- ²⁰Department of Orthopaedics, National University of Singapore, Singapore
- ²¹Department of Orthopaedics, National University of Singapore, Singapore
- ²²Department of Orthopaedics, National University of Singapore, Singapore
- ²³Department of Orthopaedics, National University of Singapore, Singapore
- ²⁴Department of Orthopaedics, National University of Singapore, Singapore
- ²⁵Department of Orthopaedics, National University of Singapore, Singapore
- ²⁶Department of Orthopaedics, National University of Singapore, Singapore
- ²⁷Department of Orthopaedics, National University of Singapore, Singapore
- ²⁸Department of Orthopaedics, National University of Singapore, Singapore
- ²⁹Department of Orthopaedics, National University of Singapore, Singapore
- ³⁰Department of Orthopaedics, National University of Singapore, Singapore
- ³¹Department of Orthopaedics, National University of Singapore, Singapore
- ³²Department of Orthopaedics, National University of Singapore, Singapore
- ³³Department of Orthopaedics, National University of Singapore, Singapore
- ³⁴Department of Orthopaedics, National University of Singapore, Singapore
- ³⁵Department of Orthopaedics, National University of Singapore, Singapore
- ³⁶Department of Orthopaedics, National University of Singapore, Singapore
- ³⁷Department of Orthopaedics, National University of Singapore, Singapore
- ³⁸Department of Orthopaedics, National University of Singapore, Singapore
- ³⁹Department of Orthopaedics, National University of Singapore, Singapore

Abstract: Mitochondria transfer their response to the organism level, and are thus central to the process whereby organisms adapt to their respective environments. Mitochondria produce molecular energy via cellular phosphorylation that then allows cells to biochemically respond and adapt to changes in their environment. Greater oxygen species (ROS) are by-products of cellular phosphorylation that can be either beneficial or damaging. Depending on the context, ROS can have both the capacity of environmental stress as well as cellular "mitohormesis". Mitohormesis refers to the process whereby low levels of oxidative stress (oxidative oligomers, where oxidative stress levels are normal) lower energy and therefore reduce mitochondrial ROS levels. This results in more capacity of standing mitochondrial responses and ROS production and having antioxidant control oligomers, similar to its adaptability to stress, opening avenues for the development of magnetic mitohormesis interventions for the improvement of human health. This integrative approach provides the structure and nature of magnetic field therapies as a form of clinical intervention to non-invasively address oxidative stress and enhance healthy management of chronic diseases.

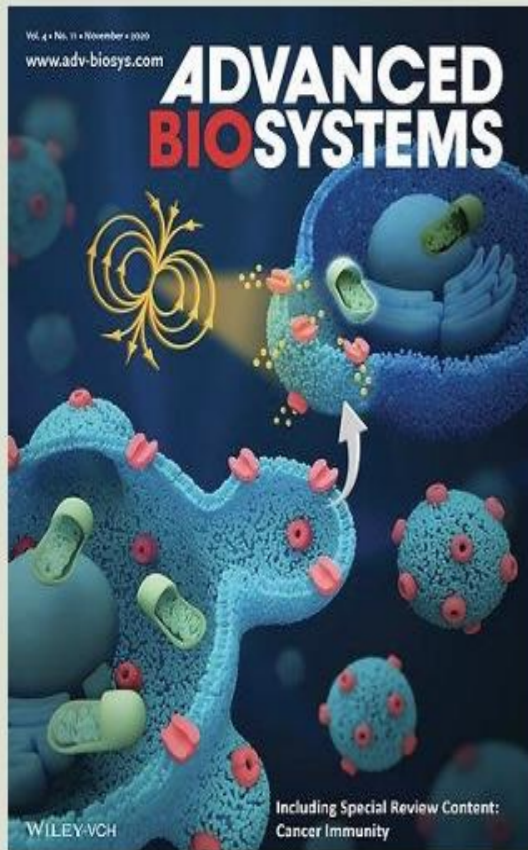
Magnetic Therapy Enhances Mobility, Muscle Function, and Pain Relief in the Elderly
Aging-US, 2023

Boosting Metabolic Efficiency of Human Muscle Mitochondria
Journal of Orthopaedic, 2022

Investigating Magnetic Therapy as a Treatment Approach for Inflammatory Diseases
BIOCELL, 2022

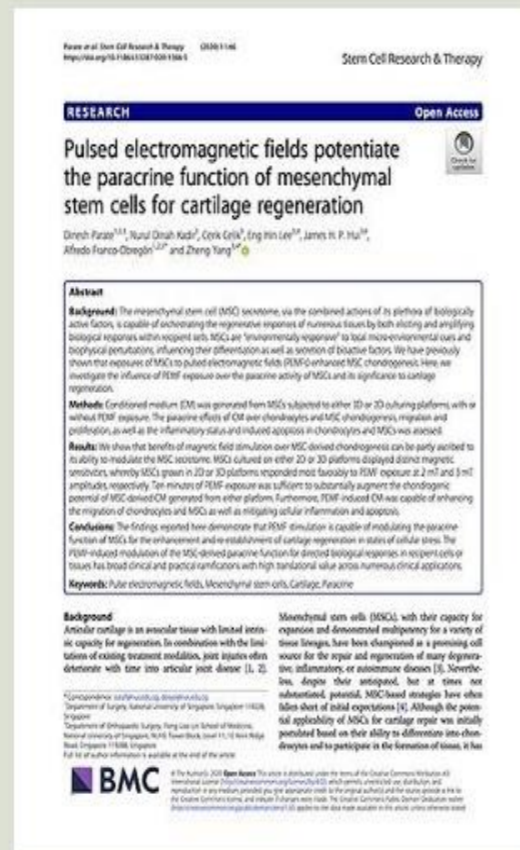
Enhancing Muscle Function and Systemic Metabolism with Magnetic Therapy
The FASEB Journal, 2020

Clinical Research and Studies



Offers a Comprehensive Explanation of the Precise Cellular Mechanisms Responsible for Magnetic-Induced Mitosis

Advanced Biosystems, 2020



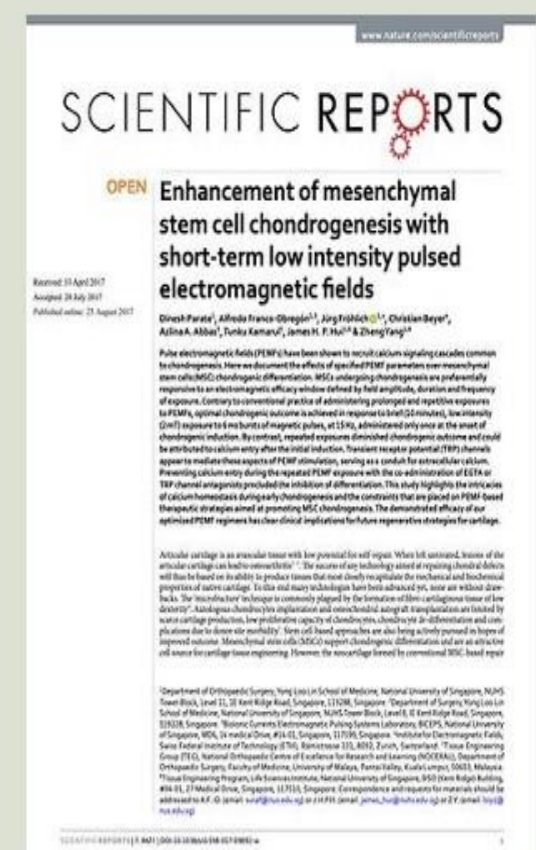
Magnetic Field Stimulation Promotes Regeneration and Secretion of Anti-Inflammatory Factors

Stem Cell Research & Therapy, 2020



Magnetic Fields Induce Mitochondrial Changes and Adaptive Responses to Boost Muscle Regeneration Capacity

The FASEB Journal, 2019



Enhancement of Mesenchymal Stem Cell Chondrogenesis through Low-Intensity Pulsed Electromagnetic Fields

Scientific Reports, 2017

CTB Page 1 of 131 Report No. CTB2303130445

TEST REPORT
IEC 60335-1
Household and similar electrical appliances – Safety –
Part 1: General requirements

Report reference No.: CTB2303130445
Date of issue: 2023-03-23
Total number of pages: 131

Testing laboratory
Name: Shenzhen CTB Testing Technology Co., Ltd.
Address: 1A2/F, Building A, No.26, Xinhua Road, Xinqiao, Xingqiao Street, Bao'an District, Shenzhen, Guangdong, China

Client
Name: Xiamen OlyLife Import and Export Co., Ltd.
Address: Room 1809-3, No. 503, Gaolin Middle Road, Huli District, Xiamen City, Fujian Province

Test specification
Standard: IEC 60335-1:2020
Test procedure: Safety report
Non-standard test method: N/A

TRF template used: IEC60335_12
Test Report Form No.: IEC60335_12
Test Report Form(s) Originator: TÜV SÜD Product Service GmbH
Master TRF: Dated 2020-12-10

Copyright © 2020 IEC System of Conformity Assessment Schemes for Electrotechnical Equipment and Components (IECEE System). All rights reserved.

This publication may be reproduced in whole or in part for non-commercial purposes as long as the IECEE is acknowledged as copyright owner and source of the material. IECEE takes no responsibility for and will not assume liability for damages resulting from the reader's interpretation of the reproduced material due to its placement and content.

Note:
If there is any objection to the inspection results in this report, please submit a written report to the company within 15 days from the date of receiving the report. The test report is effective only with both signature and specialized stamp. This result(s) shown in this report refer only to the sample(s) tested. Without written approval of Shenzhen CTB Testing Technology Co., Ltd. this report can't be reproduced except in full. The tested sample(s) and the sample information are provided by the client. "*" indicates the testing items were fulfilled by subcontracted lab. "F" indicates the items are not in CNAS accreditation scope.

Shenzhen CTB Testing Technology Co., Ltd.
Add: 1A2/F, Building A, No.26, Xinhua Road, Xinqiao, Xingqiao Street, Bao'an District, Shenzhen, Guangdong, China
Tel: 4008-707-283 Web: <http://www.ctb-lab.net> Email: ctb@ctb-lab.net

CTB Page 2 of 131

Thz Tera-P90
OlyLife

Test item description.....	Thz Tera-P90
Trade Mark(s).....	OlyLife
Manufacturer.....	Guangdong Uborui Technology
Address.....	Floor 6, Building 3, No. 1, Haiyi Street, Lanhe Town, Nansha District, Guangzhou City, Guangdong Province
Model/Type reference.....	P90
Ratings.....	220-240V~, 50/60Hz, 270W

(International Electro technical Commission or IEC)

Founded in 1906, it is the earliest non-governmental international electrotechnical standardization organization in the world, and it is a Grade A consulting organization of the United Nations Economic and Social Council (ECOSOC). IEC is responsible for the international standardization work in the field of electrical and electronic. The purpose of IEC is to promote the international unification of electrical standards, international cooperation in standardization and related aspects in the field of electrical and electronic engineering, and to enhance international mutual understanding.

OLYLIFE TERA P-90

RM5,000,000

产品责任保险
PRODUCT LIABILITY INSURANCE

安全 · 可靠 · 高品质
SAFETY | RELIABILITY | HIGH QUALITY

世界各地除了美国, 加拿大, 欧洲, 英国, 澳洲&新西兰
Worldwide excluding USA, Canada, Europe, UK, Australia & New Zealand

Olylife International Sdn Bhd
Tel: +603-9512-0000
Tel: +6019-812-9828
Email: info@olylife.com

Product liability Insurance



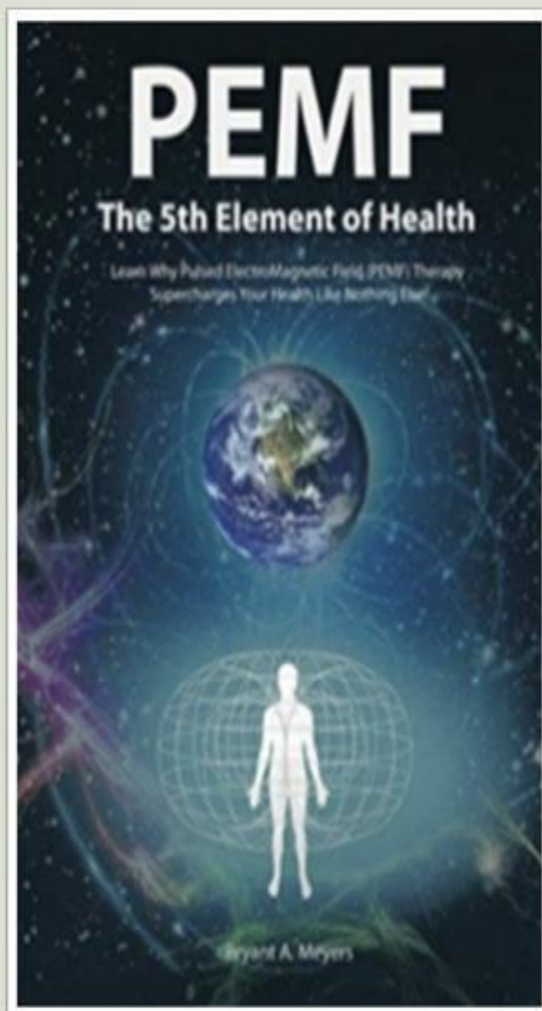
Smart Physical Therapy Device OlyLife THz Tera-P90



Bioelectromagnetic provides beneficial and health-enhancing electromagnetic frequencies to cells, activates cell functions, increase oxygen uptake and **enhance self-healing ability to achieve an optimal health.**

OlyLife THz Tera-P90

— Dual energy, compounded efficacy



Bio-electromagnetic

- 1 Mhz high-intensity energy transfer
- Act on various parts of the body
- Heat from inside out, promote metabolism
- Cell to cell interaction
- Stimulate cellular immunity



Terahertz

- 3-3000 μ m focused band, the light of life
- Synergistic resonance with body molecules to improve microcirculation
- Good penetrating power, can penetrate 4-5cm under the skin
- Safe and harmless



Benefits of Bioelectromagnetic (PEMF)

01

**Dredging
meridians**

Acts on the soles, transfers to whole body, opens up meridians of human body, stimulates the meridian Qi and clears up meridians

02

**Promoting blood
circulation**

Dilates blood vessels, reduces blood flow resistance and blood viscosity, improves microcirculation

03

**Improving
metabolism**

Supplies nutrition to cells, enhances metabolic and energy metabolism

04

**Regulating
digestive system**

Regulates various endocrine glands in the body to improve digestive functions of gastrointestinal tract

05

**Revitalizing
cells**

Stimulate dormant cells and repairs damaged cells

06

**Eliminate
blood waste**

Due to the accelerated blood circulation, there is a rapid metabolism and elimination of acidic substances in the body, leading to the decomposition and metabolism of substances thereby improving internal environment



Benefits of Bioelectromagnetic (PEMF)

07 Improving sleep

Stimulate pineal gland to produce melatonin

08 Reducing inflammation response

Increase the permeability of blood vessel walls, accelerating the elimination of inflammatory factors

09 Supporting Bone Health

Help reduce bone loss and muscle atrophy

10 Supporting healthy blood sugar levels

Users of PEMF experience relatively stable blood glucose levels

11 Supporting Muscle Health

PEMF aids in support muscle health

12 Weight management & Healthy aging

PEMF provides effects comparable to aerobic exercise, effectively supporting the body in calorie expenditure



OlyLife Tera-P90

—Dual energy, compounded efficacy



Activates cells & energy

Activate



Promotes microcirculation, metabolism and meridians

Promote

Eliminate cold-dampness

Eliminate

Remove

Removes toxins & waste

Burn

Burn fat & body shaping

Relieve

Relieves inflammation, pain & fatigue

6 Long-Term Use Benefits

OlyLife THz Tera-P90

Who Needs It?

General
Wellness



Balance
Immune
Response



Improve
Sleep



Support
Healthy
Aging



Support
Overall
Health



Improve
Sub-optimal
Health



Cold and
Numbness in
Limbs



Weight
Management



Relieve
Joint
Pain



Strengthen
muscle

Why choose OlyLife Tera P-90?



6 Long-Term Use Benefits
OlyLife Tera-P90



Activates cells & energy



Promotes microcirculation, metabolism and meridians



Eliminate cold-dampness



Removes toxins & waste



Burn fat & body shaping



Relieves inflammation, pain & fatigue

P90
Potent Effect
30 minutes per treatment



10 times of moxibustion



20 times of cupping



30 times of massage



**30 massage costs about SGD1000 per person, what about family?
Who can do 30 massages a day?**



The department of medical supervision and medical insurance will also arrange for astronauts to enter a **three-months recovery period** to restore the astronauts' physiological parameters back to their pre-flight state. It can improve the **cardiovascular system and support organ function, improve standing endurance, and eliminate fatigue after flight.**



What is “Terahertz”?



- ◆ In 2004, Terahertz (Thz) technology was first prepared by the United States, and was listed as one of the **“Ten Technologies That Will Change The Future World”**.
- ◆ In 8 January 2003, Japan listed Thz technology as the first of the **“Ten Key Strategic Objectives of the National Pillar”**, mobilizing the strength of the whole country to carry out research and development.
- ◆ In November 2005, the Chinese government specially held the **“Xiangshan Science and Technology Conference”**, inviting many domestic academicians who are influential in the field of THz research to discuss the development direction of the country's Thz business, and formulated a development plan for the country's THz technology.



2005

第270次香山科学会议

主题：太赫兹科学技术的新发展

2014

第488次香山科学会议

主题：太赫兹波在生物医学应用中的科学问题与前沿技术



《PEMF The 5th Element of Health》

Written by Dr. Bryant Meyers of the United States

Principle of Bioelectromagnetic (Pulsed Electromagnetic Field, PEMF)

Bioelectromagnetic is like a charger, it can help human body to receive energy..



3-5 times / minute

Youth

The pulse energy emitted by the human body is about 3-5 times per minute.

The PEMF can improve blood circulation and all parts of the body can receive blood. This is very important, because the human heart requires sufficient pressure to reach all parts of the human body.

1 time/ minute

As we age,

the number of pulses our body emits decreases to about 1 per minute, compared to about every 10 minutes in a diabetic patient.

The pulse energy emitted by diabetics is about **10 minutes 1 time**. It is also the cause of complications such as heart disease, diabetic foot and diabetic nephropathy in diabetics. These complications are also the leading cause of death and disability due to diabetes,

Pulsed Electromagnetic Field Therapy



Space Technology

The National Aeronautics and Space Administration (NASA) had proven PEMF treatments can **restore astronaut's health**, including **reducing bone mass and muscle atrophy**.



Relationship between Earth's magnetic field and the human body.

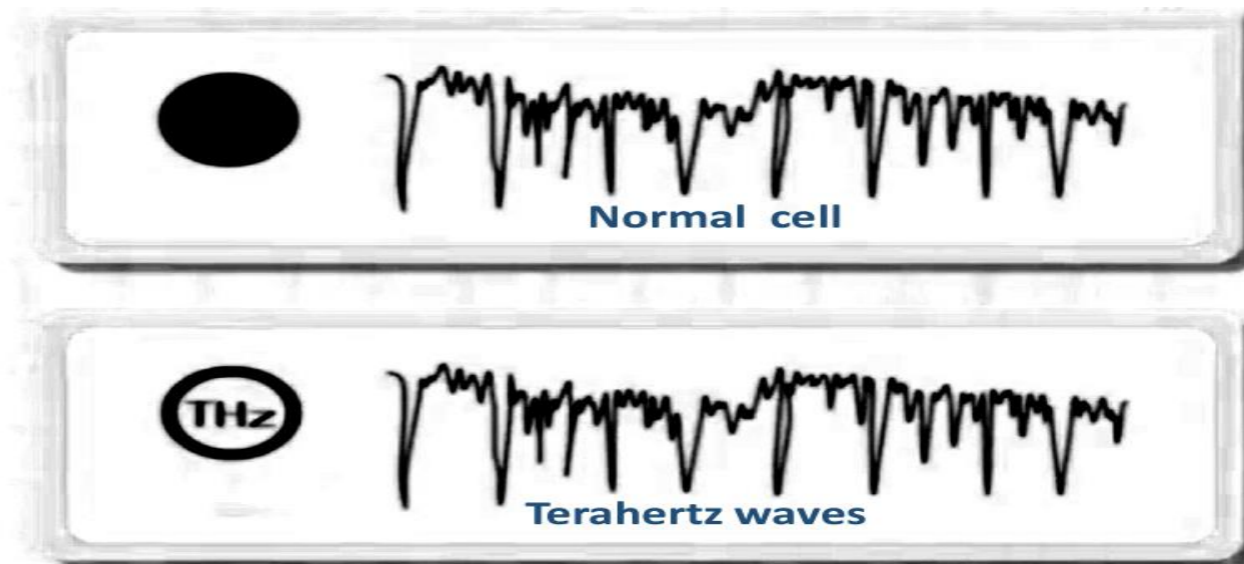


- The earth is made up of the north and south poles, a huge magnetic field.
- Sunlight, air, water, and geomagnetism are the four elements that human beings depend on for survival.

Terahertz waves resonate at the same frequency as human cells



In the 1980s, American scientists discovered a kind of light with **the same vibration frequency as normal cells** – Terahertz waves. **Its radiation is only 1/40 of that of sunlight**, which is very safe.



What is “Terahertz”?

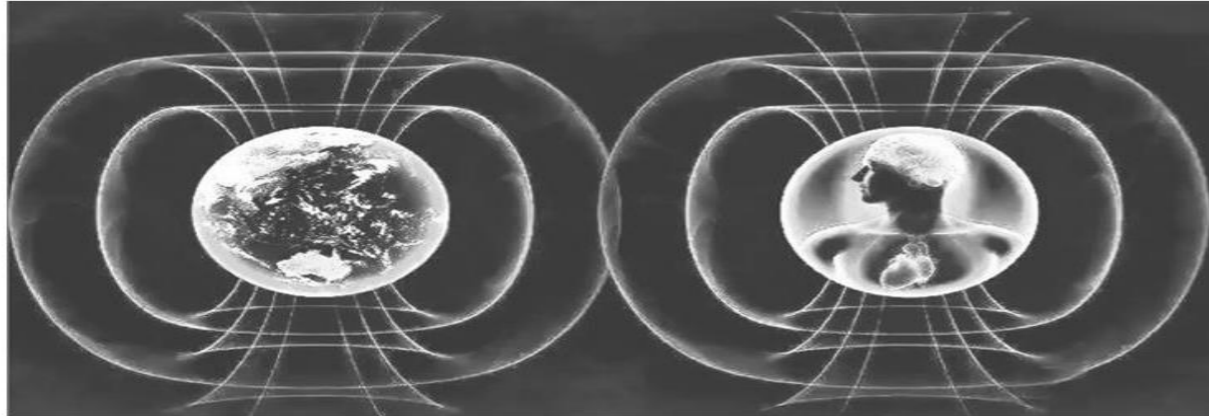


- In the electromagnetic spectrum, the wavelength of Terahertz wave is between 3 μm and 1000 μm , and the frequency is 0.1 – 10 THz.
- An electromagnetic wave between microwave and infrared.
- In the field of optics, it is called far infrared, while in the field of the electronics, it is called submillimeter wave, ultra wave, etc.
- Terahertz waves can penetrate human skin up to **3-5cm**.
- Directly acting on the deep tissue to supplement the **energy of life cells**.
- Knowns as the **“Light of Life”**
- We use **8-15 μm** precise Terahertz waves, which can better compatible with the human body (**9 μm**)

Relationship between Earth's magnetic field and the human body.



The Earth itself is a huge magnet, constantly emitting magnetic force from the north pole to the south pole and this magnetic force plays a significant role in the human body. However, recent studies show that the earth's magnetic force is gradually weakening. In addition, modern people living in reinforced concrete building and riding on steel-made vehicles further reduces the magnetic force that they can get, because concrete and steel will absorb and block the magnetic force. This demagnetization can have an effect on blood circulation, causing dysfunction in the autonomous nervous system and causes discomfort in the human body.



To counter the gradual weakening of the earth's magnetic force, the application of magnetic therapy can be used to properly compensate for and reduce the impact of the environment on the human body.

Pulsed Magnetolectric Technology Principle



Pulsed Magnetolectric Therapy is a physical treatment method that stimulates the earth's natural magnetolectric pulse to improve the body's metabolism. There exist an exchange of pulsed magnetolectric energy between living cells in our body. For example, an electroencephalogram can measure the pulsed magnetolectric of the brain and an electrocardiogram can measure the pulsed magnetolectric of the heart. Another example is the use of an electrical defibrillator to restore the heart when it stops beating.



Pulsed Magnetolectricity - Microcirculation

Blood flows from our heart through capillaries, where oxygen and nutrients carried by red blood cells are absorbed by surrounding tissues and cells.

According to a study published by Intech, a typical human red blood cell is 5-10 microns in diameter and has a surface area of about 135 square microns. The maximum efficiency of material exchange with other cells is achieved when the entire surface area of the cell is exposed. A phenomenon known as the Rouleaux Effect was discovered during live cell analysis, whereby red blood cells can stick together like stacked coins to form cell clumps.

If two red blood cells are stacked, the combined surface area is reduced from 270 square microns (2 x 135 square microns) to 193 square microns (71%). Their efficiency decreases further as the number of contiguous cells increases. Stacking of eight or more cells reduces their overall cell efficiency by 50%.

Capillaries are small in diameter (5-10 microns), and red blood cells can only pass through them singly. Therefore, the overlapping red blood cells cannot pass through the capillaries, so they cannot exchange oxygen and other nutrients with the surrounding tissue cells, resulting in hypoxia and abnormal metabolism of tissues and organs. The superposition effect of red blood cells is inhibited by pulsed magnetolectric energy (like magnetic repulsion), so that red blood cells can smoothly pass through capillaries, fully expose their surface area, and exchange nutrients such as oxygen with adjacent tissue cells.

9



Pulsed Magnetolectricity - Sleep



- ❑ Insomnia can occur at any age but is especially common in older adults. Insomnia can lead to memory problems, depression, restlessness, and an increased risk of heart disease and car-related accidents.
- ❑ The body produces natural growth hormones and melatonin during the sleep cycle. These hormones are considered key factors in anti-aging. Many pharmaceutical companies make these hormone drugs, but these drugs often have side effects.
- ❑ Studies have found that pulsed magnetic electricity can stimulate the pineal gland to produce melatonin, the most important hormone for sleep and anti-aging, and a powerful antioxidant. It also stimulates the pituitary gland to produce growth hormone, which promotes growth, cell reproduction, and regeneration in humans and other animals.
- ❑ In 2001, Pelka, Jaenicke, and Gruenwald conducted a trial in which they tried PEMF therapy for insomniacs. 70% of patients reported complete resolution of insomnia symptoms, 24% reported significant improvement in their symptoms, and 6% reported a small but critical improvement in symptoms.
- ❑ Ninety percent of the patients with insomnia who received pulsed electromagnetic therapy have significantly improved or even completely cured their symptoms.

Pulsed Magnetoelectricity - Inflammation

- ❑ Inflammation is a very common and important basic pathological process. Often manifest itself as redness, swelling, heat and pain, inflammation is a defensive response of the body to damage factors.
- ❑ Pulsed magnetoelectricity can dilate local tissue blood vessels, enhance blood lymphatic circulation, increase blood vessel wall permeability, improve local tissue nutrition and metabolism, accelerate the elimination of inflammatory factors, and reduce inflammatory reactions such as prostatitis and gynecological inflammation.

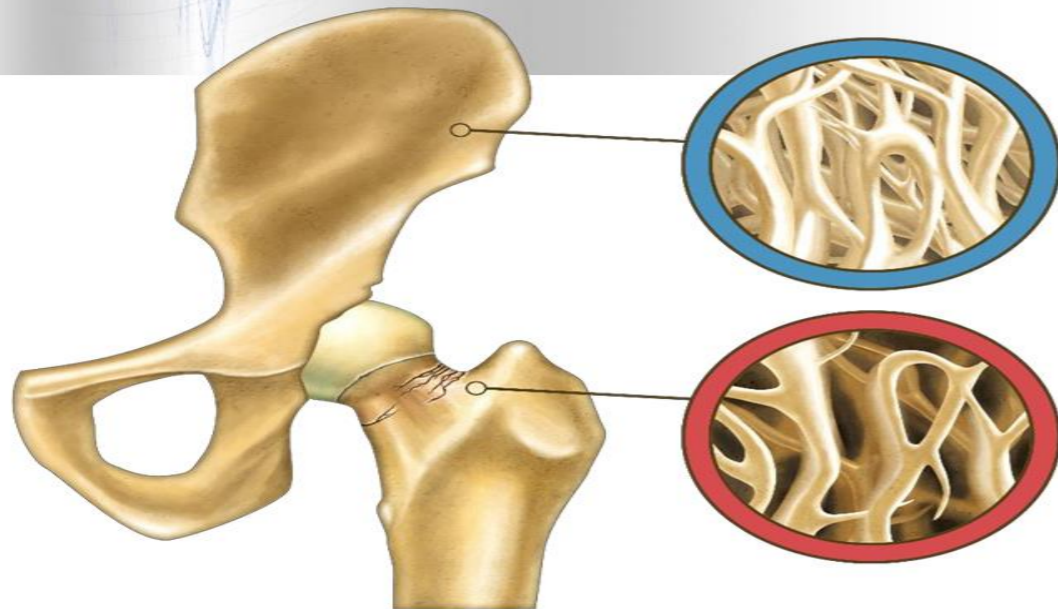


Pulsed Magnetoelectricity - Pain

- ❑ Pain is a common symptom that affects our fitness life. Local tissue inflammation is the main cause of pain. Modern medicine relieves pain by prescribing drugs such as opioids, morphine, etc. These drugs not only damage the liver and kidneys, and there is a certain degree of addiction.
- ❑ Pulsed magnetoelectricity regulates and strengthens blood circulation in painful areas through nerve conduction while reducing local inflammatory responses, especially for chronic pain. Moreover, compared with drugs, pulsed magnetoelectricity has no toxic or side effects.



Pulsed Magnetolectricity - Osteoporosis



- ❑ A study by the Johnson Space Center found that astronauts lost Earth's gravity and pulsed magneto-electric energy after being in space for a long time. Bone and muscle problems occur when returning to Earth. When they first returned, they could barely walk.
- ❑ A NASA study found that pulsed magnetolectricity can reduce bone loss and muscle atrophy. As a natural non-invasive therapy, pulsed magnetolectricity is used to prevent bone loss and muscle atrophy in astronauts.

Pulsed Magnetolectricity - Cartilage Regeneration

- ❑ Aging and wear of cartilage is a common cause of osteoarthritis in the elderly. Cartilage does not contain blood vessels and repairs slowly once damaged.
- ❑ Studies have shown that pulsed magnetolectricity directly affects bone healing and cartilage regeneration. The picture on the right shows the before and after growth of knee articular cartilage after pulsed magnetolectric intervention of a 70-year-old female patient.





Pulsed Magnetolectricity - Obesity

- ❑ The more energetic our cells are, the healthier they are. Healthy cells can usually be measured with a physiological voltage of 70-100mV but fat cells in obese patients have a physiological voltage of 20-25 mV.
- ❑ If cells lack energy, a person will get sick. The pulsed magneto-electric space can recharge cells and improve metabolism within cells. Research has confirmed that 30 minutes of pulsed magnetolectric hyperthermia can generate 400 kcal of energy conversion, which is equivalent to the energy consumed by 2 hours of aerobic exercise, promote the catabolism of lipid droplets in fat cells, and increase the burning of body fat. Improve the basic metabolism of the human body and help prevent the occurrence of metabolic diseases such as fatty liver, hyperlipidemia, and diabetes.



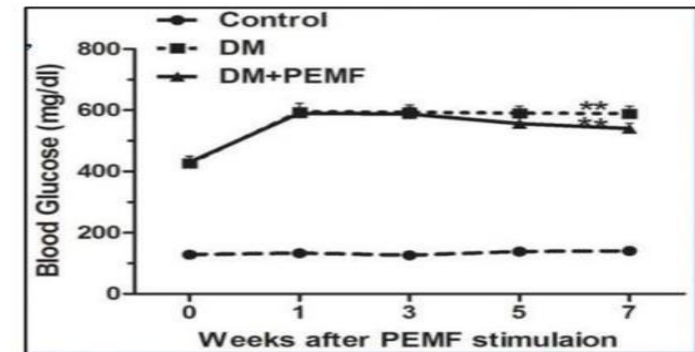
Pulsed Magnetolectricity - Aging

- ❑ Health should be one of the most important goals in our lives. We should improve our health every day through a healthy lifestyle such as a reasonable diet and scientific exercise.
- ❑ We all get old. Cells metabolize all the time, old cells gradually enter the track of programmed death, and new cells are continuously produced to replace old cells to ensure the normal function of our organs.
- ❑ Pulsed magnetolectricity plays an important role in delaying aging from the level of cell metabolism, by providing the best physiological environment for cells, promoting the growth of new cells, and maintaining their vitality, so that tissues and organs are in the best working state.



Pulsed Magnetolectricity Diabetes

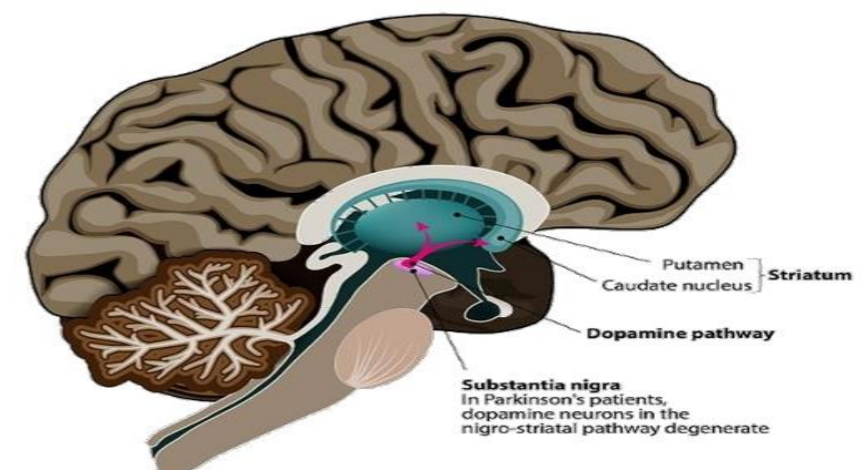
- In 1996, researchers in Russia published an article titled "A Study of the Effects of Pulsed Magnetolectricity on Vascular Complications of Diabetes". A total of 420 diabetic patients participated in the study, of which 100 patients were treated with conventional therapy and the remaining 320 patients were treated with conventional therapy in a pulsed magnetolectric environment. Twenty-eight percent of patients in the control group experienced significant improvement, compared with 74% of patients treated in a pulsed magnetolectric environment (PEM).
- Patients who received PEM therapy had a 20% higher chance of improving blood sugar control than patients who did not receive PEM.



Pulsed Magnetolectricity Parkinson's Disease

- Dr. Reuven Sandyk published several articles on Parkinson's disease each year from 1994-1996. He found that using pulsed magnetolectric therapy to treat Parkinson's disease was more effective than conventional treatments.
- Specific improvements were seen in facial expressions, body tremors, vision and memory. Patients were able to speak more fluently and had improved vision and sense of smell. He also found that the mood of the patients who used pulsed magnetotherapy also improved greatly.

PARKINSON'S DISEASE



Tera P90 — Six main functions

Under the synergistic effect of bioelectromagnetics and terahertz wave, they activate cell energy, improve microcirculation and enhance life and health. The specific role is reflected in six aspects:

- **1 Activate — Activate cells & energy**
- **2 Promote — Promote microcirculation & metabolism**
- **3 Dredge — Dredge meridians**
- **4 Eliminate — Eliminate cold, dampness & waste**
- **5 Burn — Burn fat & body shaping**
- **6 Relief — Relieve inflammation, pain & fatigue**



P90 — Product uniqueness

A

1 MHz electromagnetic energy

High-frequency energy, stronger penetrating power, more energy and better effect

B

Bio-imitation magnetic energy

Using Israeli bio-imitation magnetic energy technology, the magnetic energy is transmitted to the whole body through the sole energy plate

C

Potent effect

1 time regulation for 30 minutes is equal to 10 sessions of moxibustion, 20 sessions of cupping and 30 sessions of massage

D

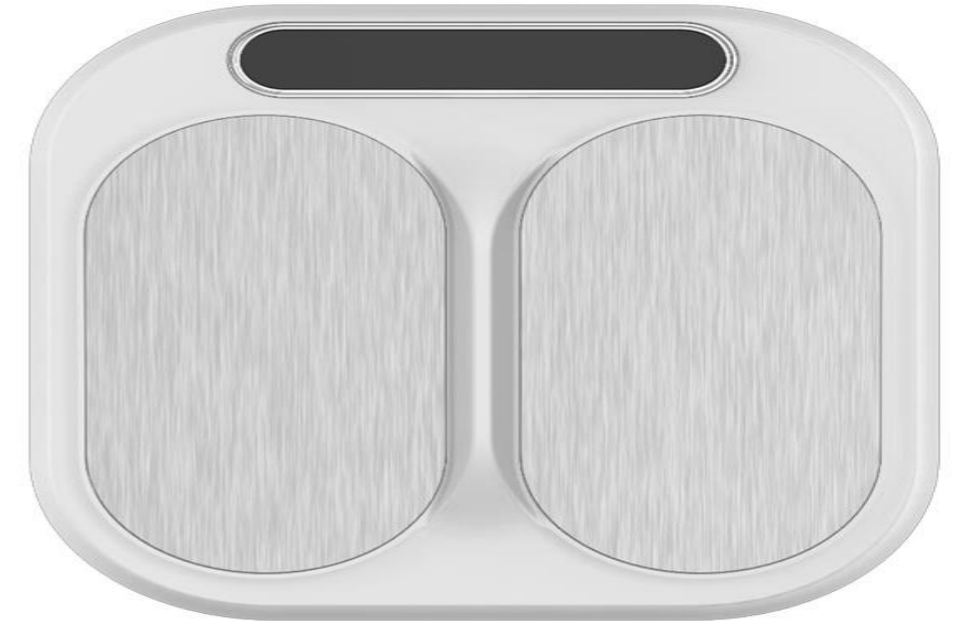
Safe and secured

Radiation is within the safe range of the human body, without any side effects to the body



Pulsed Magnetolectricity The Efficacy of Tera-P90

- | | |
|---------------------------------|-----------------------------------|
| Promote Microcirculation | Improve Lymphatic Damage |
| Promote Metabolism | Regulates Organ's Function |
| Stimulates Cell Activity | Activate Gonads |
| Improve Obesity | Remove Impurities In Body |
| Relive Muscle Strain | Eliminates Inflammation |
| Collagen Regeneration | Delay Aging |
| Smoothen Wrinkles | |



Thank You

6. 配件清单

主机	1台
遥控器	1个
产品使用说明书	1本
“品”字型国标电源线	1条

7. 注意事项

温馨提醒

使用禁忌人群:

- 1、心脏病患者禁做;
- 2、孕妇、婴幼儿禁做;
- 3、肺功能障碍者禁做;
- 4、意识有障碍者禁做;
- 5、体温超过37°C以上的人禁做;
- 6、使用维持生命的人工心肺机等设备者禁做;
- 7、出血倾向者(如子宫肌瘤患者、月经期等)禁做;
- 8、热敏感不明显者(如椎间盘突出压迫神经,导致下肢感觉不敏感)禁做;
- 9、植有心脏起搏器的患者及其他金属人造器官携带者,金属植入者禁做。

安全注意事项:

- 1、在使用仪器过程中,出现紧急情况(如停电、故障等),应及时关闭电源开关;
- 2、在使用仪器过程中,双脚不能接触,同时手不要去触碰双脚任何部位;
- 3、若感觉仪器或身体有异常,请立即停止使用;
- 4、每次仪器使用后应及时切断电源,严禁用仪器取暖或用物件盖住仪器;
- 5、请勿给儿童或无表达能力的人使用;
- 6、请勿在浴室等湿度高的地方使用,或者边洗澡边使用;
- 7、不能与其他电疗仪器同时使用,有可能引起烧伤和仪器输出不稳定情况;
- 8、请勿用金属物品触碰仪器使用区域;
- 9、仪器使用时,若出现冒烟或有异味等情况,请立即拔掉电源,并及时联系产品售后服务人员解决相关问题;
- 10、使用时双脚/膝盖不能触碰;
- 11、使用时双手双脚要保持干燥,严禁在高温、高温环境下使用;
- 12、使用时严禁用手触碰脚蹠或者能量板,脚板要完全紧贴能量板;
- 13、严禁跟其他电磁原理设备一起使用;
- 14、使用前取下身上的金属物品,严禁用金属物品接触能量板;
- 15、使用过程中也不要触及他人;
- 16、每次使用完仪器,请关机或者拔掉电源。

操作注意事项:

- 1、在使用前,请根据实时气温选择是否打开加热开关,如感觉金属板冰冷可打开加热开关进行预热,在金属板加热到温热状态后关闭加热开关,随即可正常使用本产品;
- 2、在使用时,请裸足分开放置并紧贴金属板,为避免足部局部发热过大,严禁穿着袜子使用本产品,金属板上禁止放置任何遮挡物;
- 3、在使用时,根据个人体质和感官感受选择体验强度,建议先由低档位慢慢增加到可适应的档位,并且在脚底感觉发烫时及时调低档位。不建议长时间使用高档位;
- 4、请认真阅读使用说明书,必须遵守使用须知,长时间不用仪器,请拔掉电源;
- 5、仪器平稳放置在地面,不要放置在斜坡等不平坦区域。
- 6、每次使用完毕,请关机;
- 7、仪器清洁保养时,切勿用水清洗能量板和操作面板,应用湿抹布拧干擦拭。



Activate Cellular Energy to Promote Health

Thank you for watching

